



GAT MONTHLY MEMBERSHIP PROGRESS REPORT

Results as of: 1/31/2023

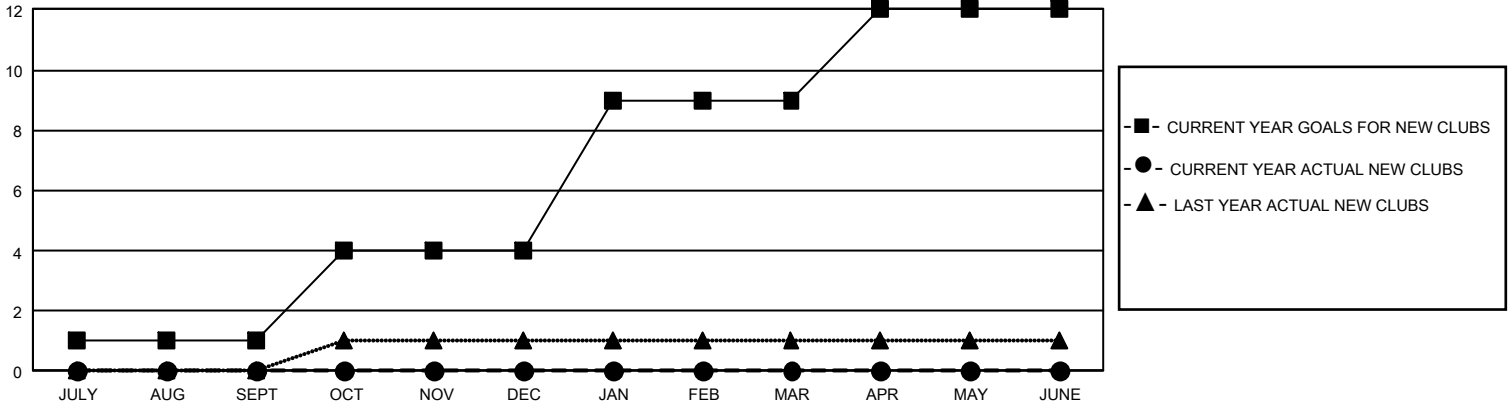
GMT Constitutional Area 1, Group G

REPORT DOES NOT INCLUDE CLUBS IN UNDISTRICTED AREAS.

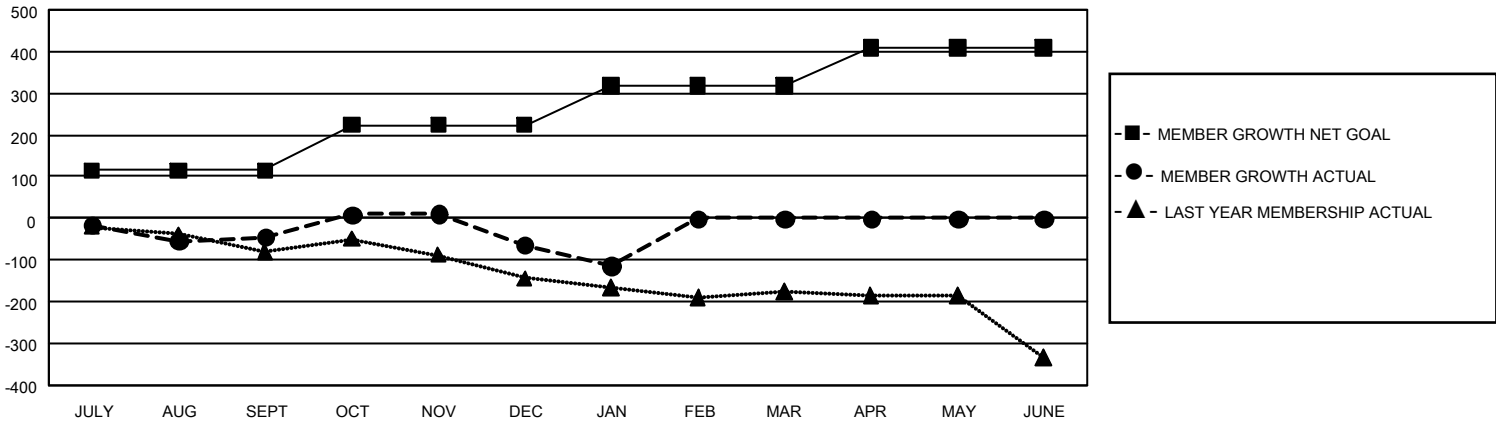
Clubs			
RESULTS FOR 2022-2023			
QUARTER	NEW CLUB GOAL	NEW CLUBS	DROPPED CLUBS
JULY/AUG/SEPT	3	0	1
OCT/NOV/DEC	9	0	0
JAN/FEB/MAR	15	0	0
APR/MAY/JUNE	9	0	0

Members			
RESULTS FOR 2022-2023			
QUARTER	MEMBER GROWTH NET GOAL	MEMBER GROWTH ACTUAL	DROPPED MEMBERS ACTUAL (including transfers)
JULY/AUG/SEPT	115	157	187
OCT/NOV/DEC	109	237	234
JAN/FEB/MAR	93	89	105
APR/MAY/JUNE	93	0	0

GOALS AND ACTUAL NEW CLUBS CUMULATIVE



GOALS AND ACTUAL MEMBERS CUMULATIVE



DROPPED CLUBS: 1	144 CLUBS OF 333 ADDED 1 OR MORE NEW MEMBERS	<u>GENDER DISTRIBUTION</u>	
<u>DROPPED MEMBERS</u>		MALE	5,419 (68.59%)
DECEASED	85	FEMALE	2,482 (31.41%)
CLUB CANCELLED	11	NON BINARY	0 (0.00%)
OTHER	430	PREFER NOT TO ANSWER	0 (0.00%)
TOTAL	526	TOTAL FAMILY UNIT MEMBERS	1,610
	CLICK HERE FOR CUMULATIVE MEMBERSHIP DATA	FAMILY MEMBERS PAYING HALF DUES	819